



NAMAN
HOMES

Live the GOOD LIFE!



SHERVANI
LEGACY

A Planned Township



INTRODUCTION

The Company was established in the year 1948 and initially engaged in the manufacture and sale of Torches, Dry Cell Batteries and Miniature Bulbs.

By early 1980s, the company enjoyed a 30% market share of the flashlight business, and 10% of the battery business in the country.

Now the Group is in the business of Real Estate, Hospitality and Food Products.

A few years ago on account of a shortage of good quality and affordable housing in the market, the company started its first real estate project called Sterling Apartments.

After the remarkable success of its first project, the company decided to scale up its foray in the real estate business, and create a township on its own Land.

Shervani Legacy is a planned township in Prayagraj comprising of 174 residential plots of approx 200 Sq. Yards each, multi storey apartment, a commercial complex, School, Parks with an excellent living environment.



ABOUT NAMAN HOMES

Naman Homes, a premium residential apartment project in Prayagraj, is the latest offering from the Shervani Group. Given the high demand for company's apartments and its success with Sterling and Tara Group Housing Projects, **Naman Homes** is a notch higher; designed to provide an excellent living environment to our customers.

Naman Homes is located in the Shervani Legacy complex, a premium township in the city of Prayagraj. Despite being minutes away from the High Court, Civil Lines and Railway Station, the location offers a pleasant sanctuary from the hustle and bustle of the city.

Naman Homes is the company's third multi-storey complex. It lies opposite Tara Towers across a 12 metre road. **Naman Homes** has been designed to provide a top living environment and a more efficient and comfortable living space.

Naman Homes comprises of two separate towers of 13 storeys each. The 2BHK tower is designed with two blocks of 8 apartments on each floor having 207 nos. of 2BHK apartments. The second tower comprises 51 nos. exclusive 3BHK block with only four premium apartments on each floor.

CLUSTER PLAN



3 BHK FLOOR PLAN





2 BHK FLOOR PLAN



UNIT PLAN OF 3 BHK

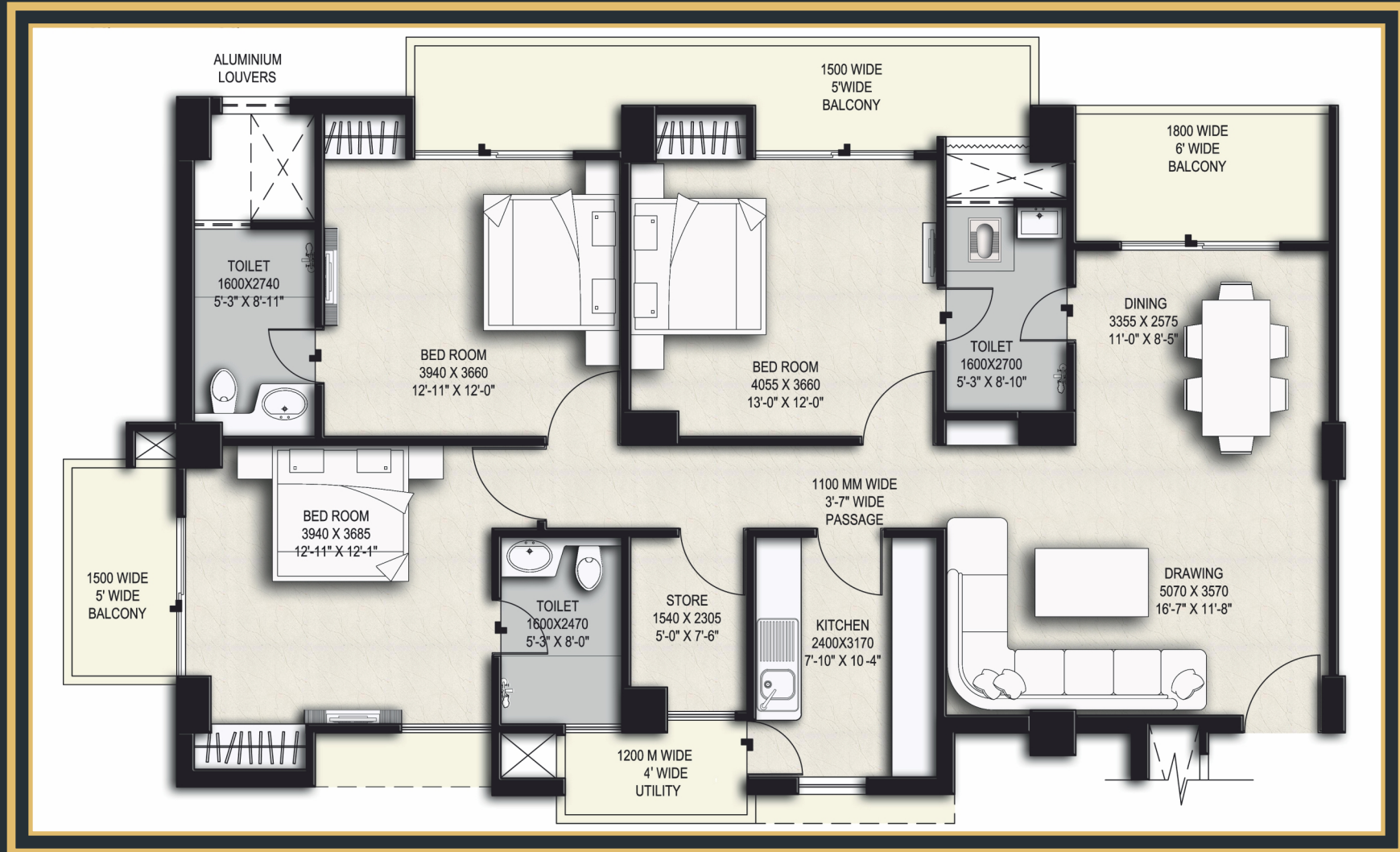


3 BEDROOM

CARPET AREA : 106.76 Sq.Mt / 1149.15 Sq.Ft

BUILT UP AREA : 149.75 Sq.Mt / 1611.89 Sq.Ft

SUPER BUILT UP AREA : 172.50 Sq.Mt / 1856.77 Sq.Ft





3 BHK 3D MODEL



- The visual representation shown in this brochure is purely conceptual and not a legal offering. All images, plans, specifications, site plan, layout plans etc are tentative and subject to variation and modification by the company or the competent authorities sanctioning plans.

UNIT PLAN OF 2 BHK FLAT



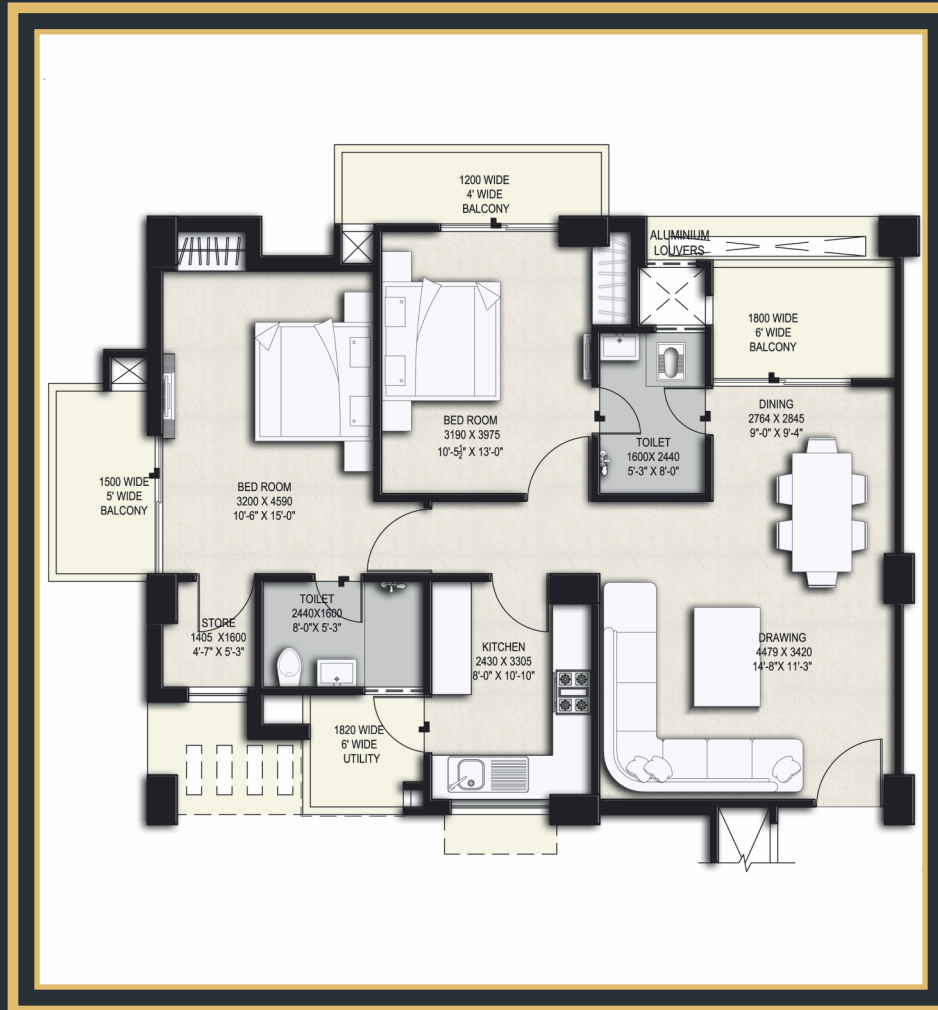
2 BEDROOM

AREA : TYPE 'A'

CARPET AREA : 77.41 Sq.Mt/833.23 Sq.Ft

BUILT UP AREA : 112.84 Sq.Mt / 1214.59 Sq.Ft

SUPER BUILT UP AREA : 135.36 Sq.Mt / 1456.47 Sq.Ft



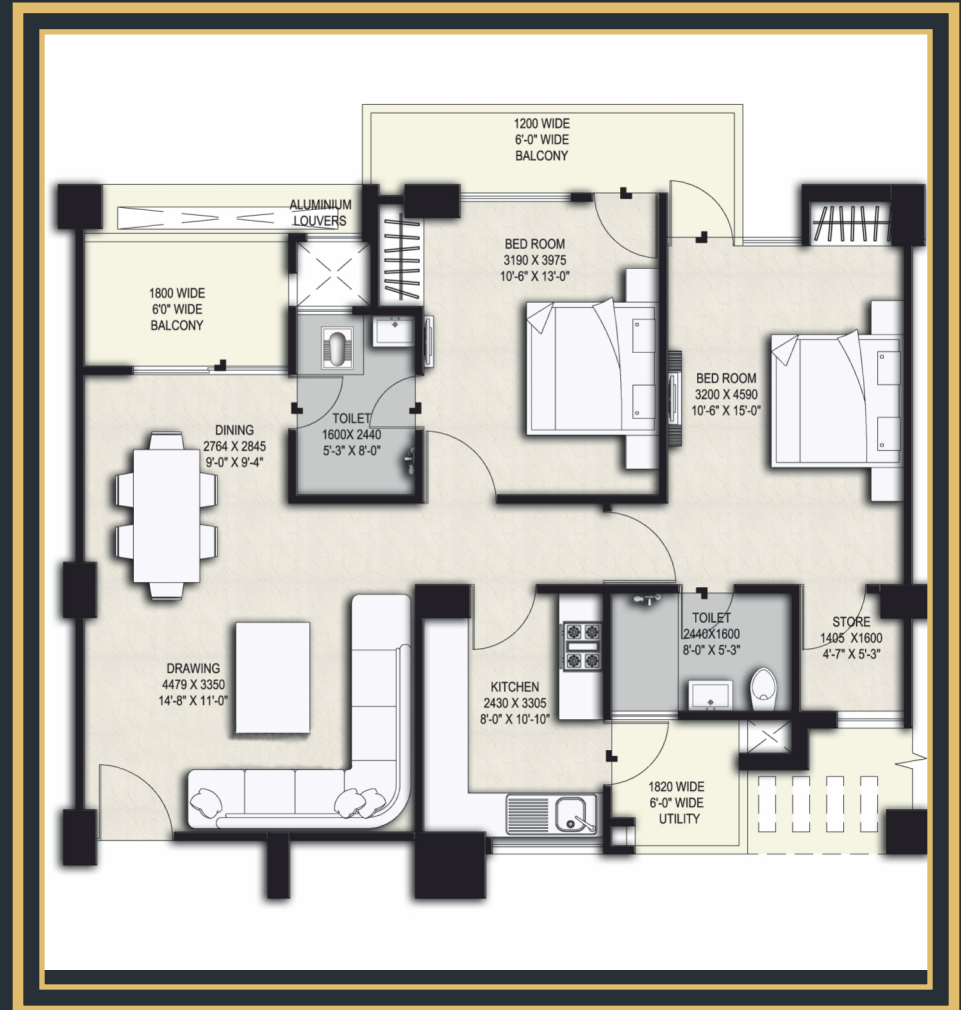
2 BEDROOM

AREA : TYPE 'B'

CARPET AREA : 77.41 Sq.Mt / 833.23 Sq.Ft

BUILT UP AREA : 106.03 Sq.Mt / 1141.29 Sq.Ft

SUPER BUILT UP AREA : 128.55 Sq.Mt / 1383.70 Sq.Ft





2 BHK 3D MODEL



- The visual representation shown in this brochure is purely conceptual and not a legal offering. All images, plans, specifications, site plan, layout plans etc are tentative and subject to variation and modification by the company or the competent authorities sanctioning plans.

SPECIAL FEATURES



- ★ Situated in Shervani Legacy
- ★ Earthquake resistant RCC Structure
- ★ Round the Clock Security System
- ★ Approx. 70% Open Area
- ★ 2 KVA Integrated Power Supply Back Up
- ★ Large Size Elevators
- ★ Vitrified Tile Flooring
- ★ Modular Kitchen
- ★ Complete Fire Fighting Arrangements
- ★ Children Play Area
- ★ Basement Parking
- ★ ADA Approved
- ★ Easy Instalments
- ★ Availability of Bank Finance





NAMAN HOMES





SHERVANI LEGACY

A Planned Township

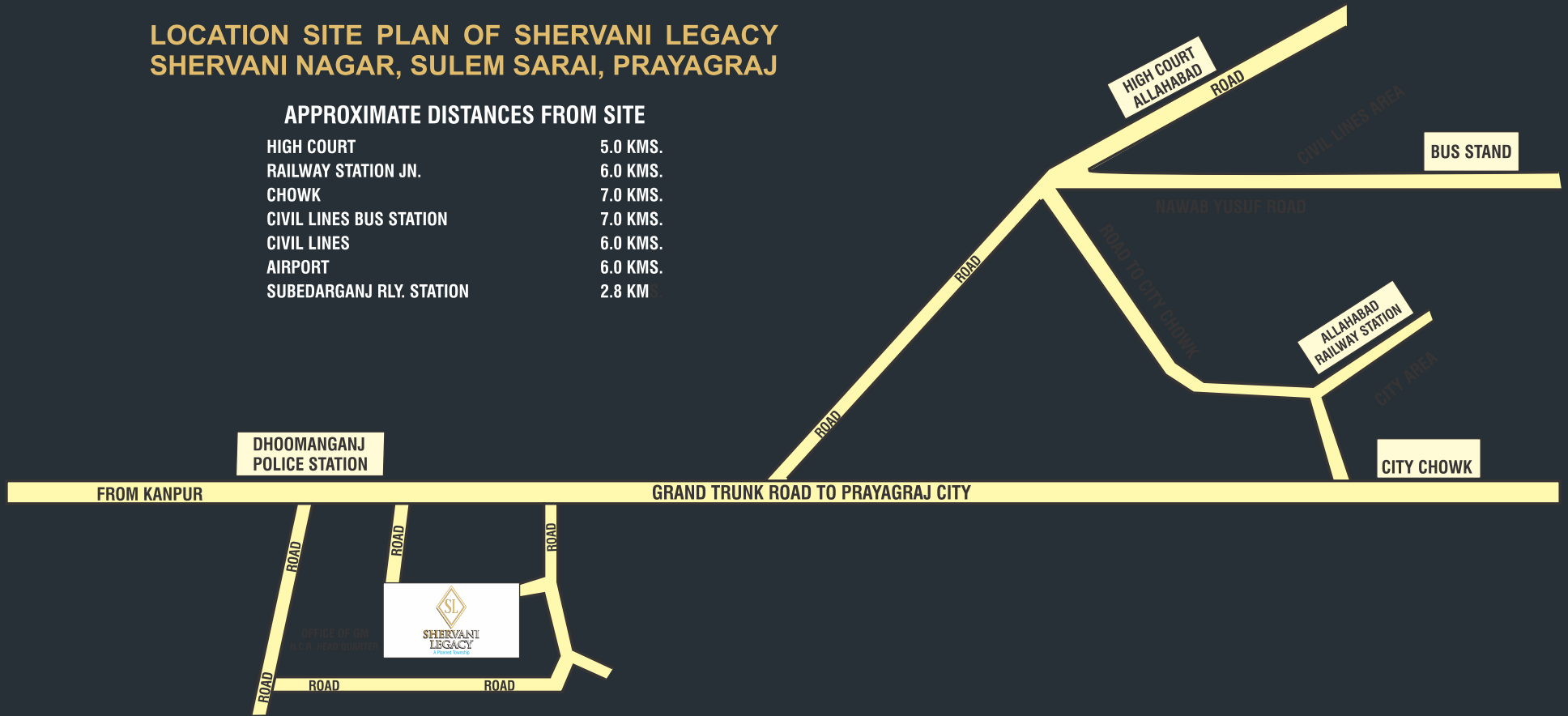




LOCATION SITE PLAN OF SHERVANI LEGACY SHERVANI NAGAR, SULEM SARAI, PRAYAGRAJ

APPROXIMATE DISTANCES FROM SITE

HIGH COURT	5.0 KMS.
RAILWAY STATION JN.	6.0 KMS.
CHOWK	7.0 KMS.
CIVIL LINES BUS STATION	7.0 KMS.
CIVIL LINES	6.0 KMS.
AIRPORT	6.0 KMS.
SUBEDARGANJ RLY. STATION	2.8 KM



Architects

DESIGN STUDIO

Ar. Manish Gujral (B.Arch, FIV)

Ar. Tarana Naseer (B.Arch, M.Plan)

52/25-B, Muir Road, Near Juhi Colony, Prayagraj

For Details Please Contact :

SHERVANI INDUSTRIAL SYNDICATE LIMITED

Shervani Nagar, Sulem Sarai, Harwara, Prayagraj-211001 (U.P.)

Mob.: +91-9415218149, +91-9415237730, +91-9415218143

Fax : +91-532-2436928

www.shervanilegacy.com



SHERVANI LEGACY

A Planned Township

**STERLING
APARTMENTS**



Developed By

SHERVANI INDUSTRIAL SYNDICATE LIMITED

Contact : +91-9415218149, +91-9415237730, +91-9415218143 | www.shervanilegacy.com

RERA Regn. No. : UPRERAPRJ666348 | Website : www.up-rera.in

Disclaimer

- Images/Facilities shown above are only representational and informative. Information, images, and visuals are only indicative of the envisaged developments and the same are subject to change in actual as per approvals. The views shown in the pictures may vary over the period of time and does not guarantee the same. All intending purchaser/s are bound to inspect all plans and approvals and visit the project site and apprise themselves of all plans and approvals and other relevant information obtained from time to time from respective authority. The promoter holds no responsibility for its accuracy and shall not be liable to any intending purchaser or anyone for the changes/ alterations/ improvements so made.

RERA Regn. No. : UPRERAPRJ666348 | Website : www.up-rera.in